

## Particulars of organization, functions and duties

### 1. Vision Statement

“Imparting quality education is not the only duty of an educational institution; it also has to play a leading role in developing the corporate personality of its students.”

### 2. Objective

Organization of teaching to under-graduate students admitted to various courses approved by the University of Delhi from time to time and ensure their wholesome education through extra-curricular activities and sports.

### 3. Brief history

Swami Sharddhanand College, a constituent College of Delhi University, is run under the trusteeship of Delhi Govt. It is a co-educational institution and imparts instructions in various subjects at both undergraduate and post-graduate levels. Situated in the sylvan ambience of North Delhi, the College has completed 46 years of its existence. From the humble beginning in the Gandhi Ashram building in Narela, the college is now one of the premier institutions of Delhi University. It is equipped with qualified teaching staff, specialized laboratories and adequate library facilities..

### 4. Courses Offered

The college imparts instruction and training in the following courses :

- (i) B.Sc Life Science.
- (ii) B.Sc Physical Science.
- (iii) B.Sc(H) Botany.
- (iv) B.Sc(H) Microbiology
- (v) B.Sc(H) Physics.
- (vi) B.Sc(H) Chemistry.
- (vii) B.Sc(H) Zoology.
- (viii) B.Com. (P)
- (ix) B.Com. (H)
- (x) B.A (H) English.
- (xi) B.A (H) Geography
- (xii) B.A (H) Hindi
- (xiii) B.A (H) History
- (xiv) B.A Programme

5. Expectation of the college from the public for enhancing its effectiveness and efficiency

The college expects objective and considered support from citizens of Delhi as well as persons directly associated with the affairs of the college and the University of Delhi.

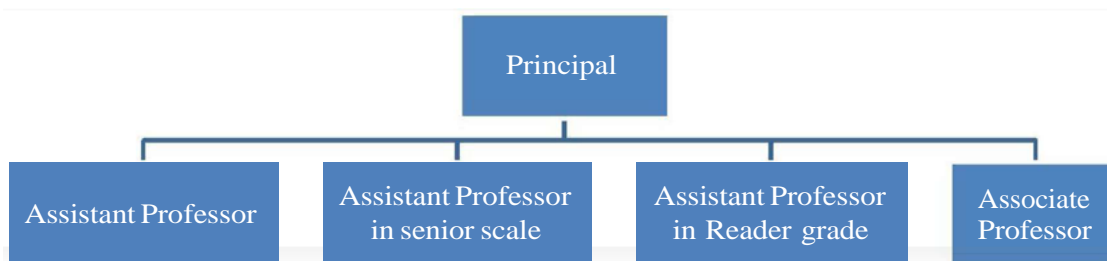
6. Arrangements and methods made for seeking public participation/ contribution

Public involvement in the affairs of the college is through nomination of people from various walks of public life on its Governing Body as per provisions of statute 30(1)(c)(i) of Delhi University Act, 1922.

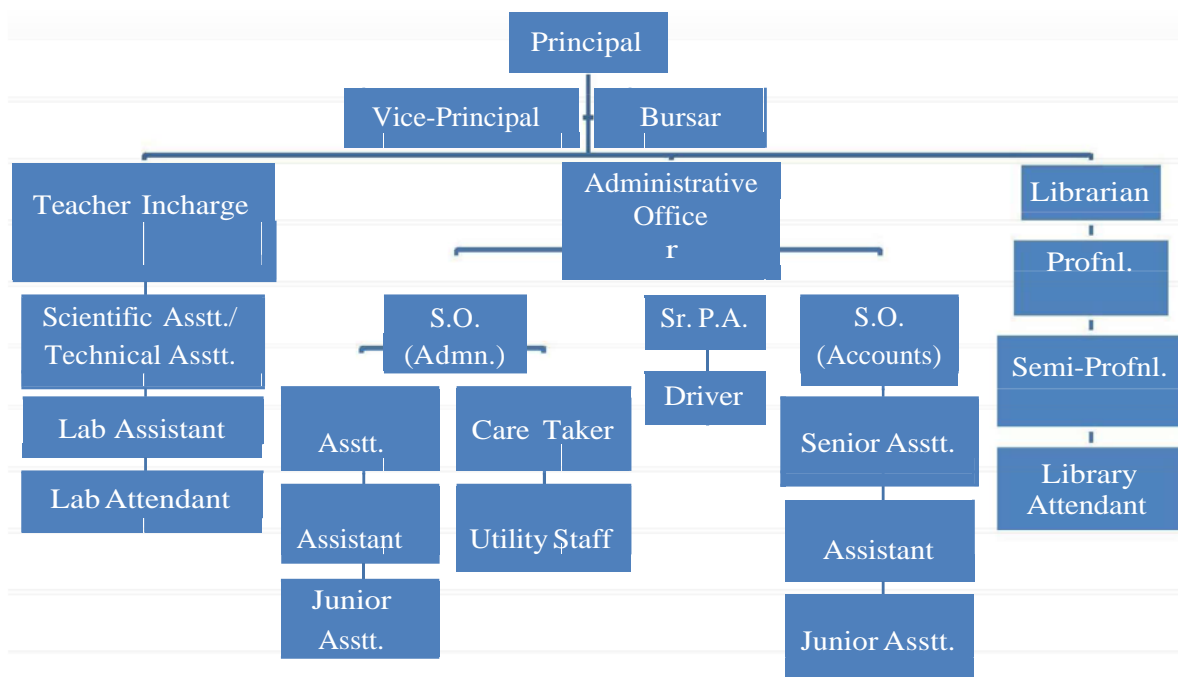
7. Mechanism available for monitoring the service delivery and public grievance resolution

Management of the various activities of the college is supervised by the Principal through designated committees. Monitoring of the affairs of the college is through its Governing Body, Academic Council & Executive Council of the University of Delhi.

8. Organizational Chart for Teaching staff



9. Organizational Chart for Non-Teaching staff:



10. Address of the College:

Swami Shraddhanand College, Main G. T. Karnal Road, Alipur, Delhi – 110036.

11. Working hours of the College:

Hours of office are from 9.00 a.m. to 5.30 p.m. (Monday to Friday)

Teaching for regular courses is 05 days a week. (Monday to Friday)