



Swami Shraddhanand College University of Delhi

Supporting Document: **1.3.1**

Institution integrates crosscutting issues relevant to Professional Ethics, Gender, Human Values, Environment and Sustainability into the Curriculum

METRIC ANALYSIS



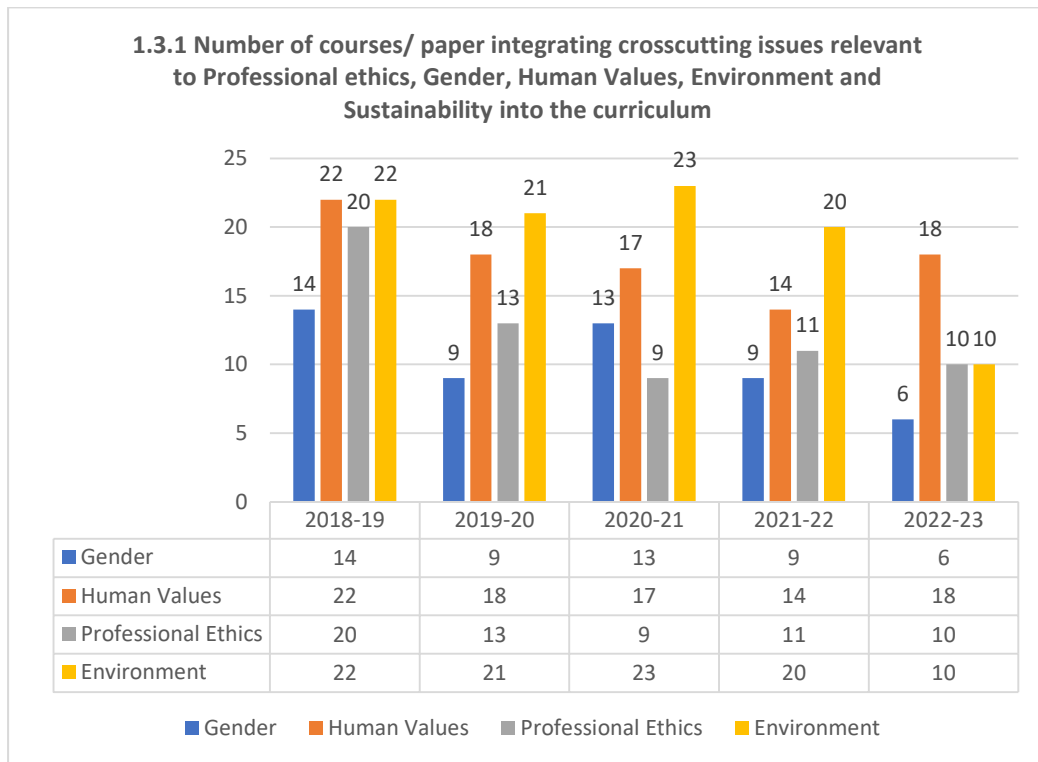
Assessment Period: 2018-2023



Swami Shraddhanand College University of Delhi

Metric: 1.3.1

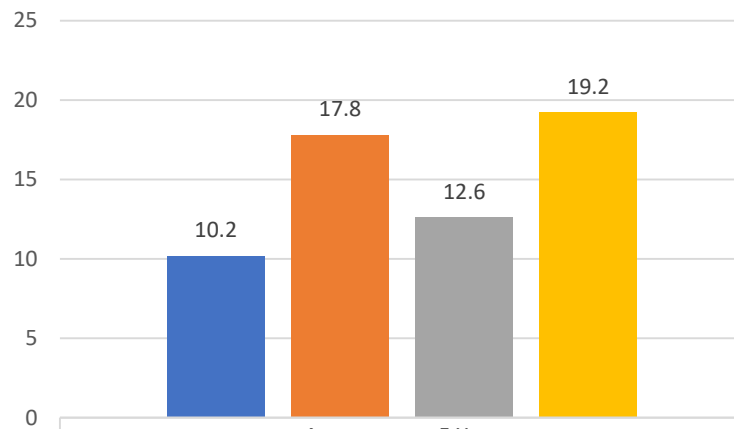
Institution integrates crosscutting issues relevant to Professional Ethics, Gender, Human Values, Environment and Sustainability into the Curriculum





Swami Shraddhanand College University of Delhi

Average number of courses/papers taught that integrates crosscutting issues relevant to Professional Ethics, Gender, Human values, Environment and sustainability into the curriculum in last 5 years

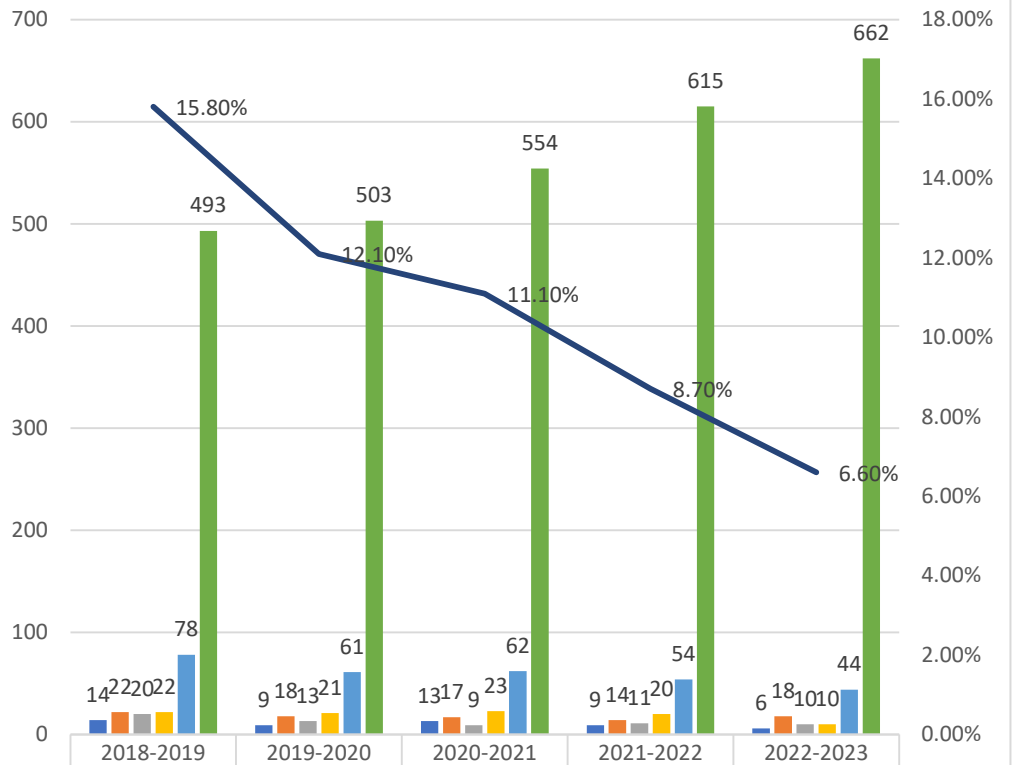


	Average over 5 Year
■ Gender	10.2
■ Human Values	17.8
■ Professional Ethics	12.6
■ Environment	19.2



Swami Shraddhanand College University of Delhi

Average number of courses/papers taught that integrates crosscutting issues relevant to Professional Ethics, Gender, Human values, Environment and sustainability into the curriculum in last 5 years



Gender	14	9	13	9	6
Human Values	22	18	17	14	18
Professional Ethics	20	13	9	11	10
Environment and Sustainability	22	21	23	20	10
Total Courses opted over 5 Years	78	61	62	54	44
Total Courses offered over 5 Years	493	503	554	615	662
Average over 5 years	15.80%	12.10%	11.10%	8.70%	6.60%

- Gender
- Human Values
- Professional Ethics
- Environment and Sustainability
- Total Courses opted over 5 Years
- Total Courses offered over 5 Years
- Average over 5 years



Swami Shraddhanand College University of Delhi

1.3.1. Institution integrates crosscutting issues relevant to Professional Ethics, Gender, Human Values, Environment and Sustainability into the Curriculum

Academic Year	2018- 2019	2019- 2020	2020- 2021	2021- 2022	2022- 2023
Gender	14	9	13	9	6
Human Values	22	18	17	14	18
Professional Ethics	20	13	9	11	10
Environment and Sustainability	22	21	23	20	10
Total Courses opted over 5 Years	78	61	62	54	44
Total Courses offered over 5 Years	493	503	554	615	662
Average over 5 years	15.80%	12.10%	11.10%	8.70%	6.60%